

Product datasheet for **TA343024**

MASTL Rabbit Polyclonal Antibody

Product data:

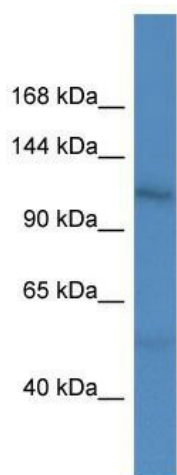
Product Type:	Primary Antibodies
Applications:	WB
Recommended Dilution:	WB
Reactivity:	Human
Host:	Rabbit
Isotype:	IgG
Clonality:	Polyclonal
Immunogen:	The immunogen for anti-MASTL antibody: synthetic peptide directed towards the C terminal of human MASTL. Synthetic peptide located within the following region: NKENIVNSFTDKQQTPEKLPIMIAKNLMCELDEDCEKNSKRDYLSSSF
Formulation:	Liquid. Purified antibody supplied in 1x PBS buffer with 0.09% (w/v) sodium azide and 2% sucrose. <i>Note that this product is shipped as lyophilized powder to China customers.</i>
Conjugation:	Unconjugated
Storage:	Store at -20°C as received.
Stability:	Stable for 12 months from date of receipt.
Predicted Protein Size:	97 kDa
Gene Name:	microtubule associated serine/threonine kinase like
Database Link:	NP_116233 Entrez Gene 84930 Human Q96GX5
Background:	This gene encodes a microtubule-associated serine/threonine kinase. Mutations at this locus have been associated with autosomal dominant thrombocytopenia, also known as thrombocytopenia-2. Alternatively spliced transcript variants have been described for this locus.
Synonyms:	GREATWALL; GW; GWL; MAST-L; THC2
Note:	Immunogen Sequence Homology: Human: 100%; Rabbit: 86%; Dog: 82%; Pig: 79%; Horse: 79%; Bovine: 79%; Rat; Mouse; Guinea pig



[View online »](#)

Protein Families: Druggable Genome, Protein Kinase

Product images:



WB Suggested Anti-MASTL Antibody; Titration: 1.0 ug/ml; Positive Control: Fetal Heart