

Product datasheet for **TA343023**

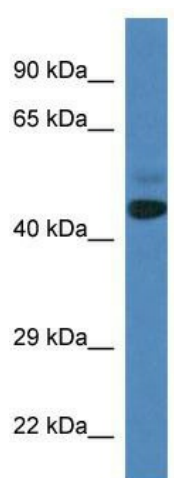
SPRYD3 Rabbit Polyclonal Antibody

Product data:

Product Type:	Primary Antibodies
Applications:	WB
Recommended Dilution:	WB
Reactivity:	Human
Host:	Rabbit
Isotype:	IgG
Clonality:	Polyclonal
Immunogen:	The immunogen for anti-SPRYD3 antibody: synthetic peptide directed towards the N terminal of human SPRYD3. Synthetic peptide located within the following region: LVPQYYSLDHQPGWLPDSVAYHADDGKLYNGRAKGRQFGSKCNSGDRIGC
Formulation:	Liquid. Purified antibody supplied in 1x PBS buffer with 0.09% (w/v) sodium azide and 2% sucrose.
Conjugation:	Unconjugated
Storage:	Store at -20°C as received.
Stability:	Stable for 12 months from date of receipt.
Predicted Protein Size:	50 kDa
Gene Name:	SPRY domain containing 3
Database Link:	NP_116229 Entrez Gene 84926 Human Q8NCJ5
Background:	The function remains unknown.
Synonyms:	FLJ14800
Note:	Immunogen Sequence Homology: Dog: 100%; Pig: 100%; Rat: 100%; Horse: 100%; Human: 100%; Mouse: 100%; Bovine: 100%; Rabbit: 100%; Guinea pig: 100%
Protein Families:	Druggable Genome



[View online »](#)

Product images:

WB Suggested Anti-SPRYD3 Antibody; Titration:
1.0 ug/ml; Positive Control: Fetal Heart