

## Product datasheet for **TA343022**

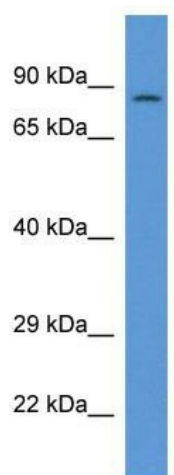
### PPP1R15B Rabbit Polyclonal Antibody

#### Product data:

Product Type:	Primary Antibodies
Applications:	WB
Recommended Dilution:	WB
Reactivity:	Human
Host:	Rabbit
Isotype:	IgG
Clonality:	Polyclonal
Immunogen:	The immunogen for anti-PPP1R15B antibody: synthetic peptide directed towards the C terminal of human PPP1R15B. Synthetic peptide located within the following region: SFCSVDPYNPQNFTATIQTAAARIVPEEPSDSEKDLGKSDLENSQSGSL
Formulation:	Liquid. Purified antibody supplied in 1x PBS buffer with 0.09% (w/v) sodium azide and 2% sucrose. <i>Note that this product is shipped as lyophilized powder to China customers.</i>
Conjugation:	Unconjugated
Storage:	Store at -20°C as received.
Stability:	Stable for 12 months from date of receipt.
Predicted Protein Size:	79 kDa
Gene Name:	protein phosphatase 1 regulatory subunit 15B
Database Link:	<a href="#">NP_116222</a> <a href="#">Entrez Gene 84919 Human</a>
Background:	PPP1R15B promotes dephosphorylation of the transcription initiation factor EIF2-alpha through recruitment of protein phosphatase-1 (PP1) catalytic subunits.
Synonyms:	CREP; MSSGM2
Note:	Immunogen Sequence Homology: Human: 100%; Bovine: 92%; Dog: 91%
Protein Families:	Druggable Genome



[View online »](#)

**Product images:**

WB Suggested Anti-PPP1R15B Antibody; Titration:  
1.0 ug/ml; Positive Control: THP-1 Whole Cell