

Product datasheet for **TA343021**

Cirhin (UTP4) Rabbit Polyclonal Antibody

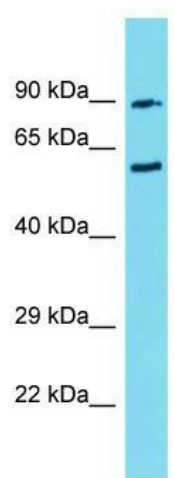
Product data:

Product Type:	Primary Antibodies
Applications:	WB
Recommended Dilution:	WB
Reactivity:	Human
Host:	Rabbit
Isotype:	IgG
Clonality:	Polyclonal
Immunogen:	The immunogen for anti-CIRH1A antibody is: synthetic peptide directed towards the middle region of Human CIRH1A. Synthetic peptide located within the following region: ADVQSIAVADQEDSFVVGTAEGTVFHFQLVPVTSNSSEKQWVRTKPFQHH
Formulation:	Liquid. Purified antibody supplied in 1x PBS buffer with 0.09% (w/v) sodium azide and 2% sucrose. <i>Note that this product is shipped as lyophilized powder to China customers.</i>
Conjugation:	Unconjugated
Storage:	Store at -20°C as received.
Stability:	Stable for 12 months from date of receipt.
Predicted Protein Size:	62 kDa
Gene Name:	UTP4, small subunit processome component
Database Link:	NP_116219 Entrez Gene 84916 Human Q969X6
Background:	This gene encodes a WD40-repeat-containing protein that is localized to the nucleolus. Mutation of this gene causes North American Indian childhood cirrhosis, a severe intrahepatic cholestasis that results in transient neonatal jaundice, and progresses to periportal fibrosis and cirrhosis in childhood and adolescence.
Synonyms:	CIRH1A; CIRHIN; NAIC; TEX292
Note:	Immunogen Sequence Homology: Dog: 100%; Rat: 100%; Horse: 100%; Human: 100%; Mouse: 100%; Pig: 93%; Bovine: 93%; Guinea pig: 93%; Rabbit: 79%



[View online >](#)

Product images:



Host: Rabbit; Target Name: CIRH1A; Sample
Tissue: 721_B Whole Cell lysates; Antibody
Dilution: 1.0 ug/ml