

## Product datasheet for **TA343019**

### ZDH12 (ZDHHC12) Rabbit Polyclonal Antibody

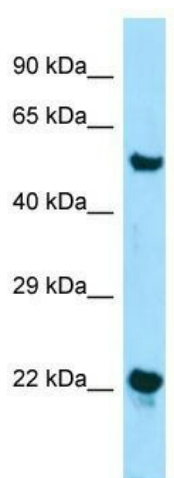
#### Product data:

Product Type:	Primary Antibodies
Applications:	WB
Recommended Dilution:	WB
Reactivity:	Human
Host:	Rabbit
Isotype:	IgG
Clonality:	Polyclonal
Immunogen:	The immunogen for anti-ZDHHC12 antibody is: synthetic peptide directed towards the N-terminal region of Human ZDHHC12. Synthetic peptide located within the following region: PGYVNVQPQPQEELKEEQTAMVPPAIPLRRCRYCLVLQPLRARHCRECRR
Formulation:	Liquid. Purified antibody supplied in 1x PBS buffer with 0.09% (w/v) sodium azide and 2% sucrose.
Purification:	Affinity Purified
Conjugation:	Unconjugated
Storage:	Store at -20°C as received.
Stability:	Stable for 12 months from date of receipt.
Predicted Protein Size:	23 kDa
Gene Name:	zinc finger DHHC-type containing 12
Database Link:	<a href="#">NP_116188</a> <a href="#">Entrez Gene 84885 Human</a> <a href="#">Q96GR4</a>
Background:	The function of this protein remains unknown.
Synonyms:	DHHC-12; ZNF400
Note:	Immunogen Sequence Homology: Human: 100%; Dog: 93%; Pig: 93%; Rat: 93%; Horse: 93%; Guinea pig: 93%; Bovine: 92%; Mouse: 79%
Protein Families:	Transmembrane



[View online »](#)

## Product images:



Host: Rabbit; Target Name: ZDHHC12; Sample  
Tissue: Jurkat whole cell lysates; Antibody  
Dilution: 1.0 ug/ml