

## Product datasheet for **TA343018**

### RSPO3 Rabbit Polyclonal Antibody

#### Product data:

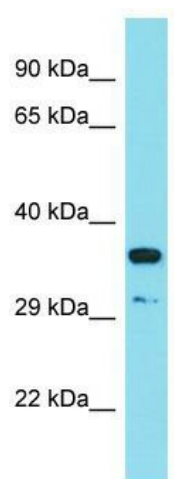
Product Type:	Primary Antibodies
Applications:	WB
Recommended Dilution:	WB
Reactivity:	Human
Host:	Rabbit
Isotype:	IgG
Clonality:	Polyclonal
Immunogen:	The immunogen for anti-RSPO3 antibody is: synthetic peptide directed towards the C-terminal region of Human RSPO3. Synthetic peptide located within the following region: QRKKCQKGERGKKGRERKRKKPNKGESKEAIPDSKSLESSKEIPEQRENK
Formulation:	Liquid. Purified antibody supplied in 1x PBS buffer with 0.09% (w/v) sodium azide and 2% sucrose. <i>Note that this product is shipped as lyophilized powder to China customers.</i>
Conjugation:	Unconjugated
Storage:	Store at -20°C as received.
Stability:	Stable for 12 months from date of receipt.
Predicted Protein Size:	31 kDa
Gene Name:	R-spondin 3
Database Link:	<a href="#">NP_116173</a> <a href="#">Entrez Gene 84870 Human</a> <a href="#">Q9BXY4</a>
Background:	This gene encodes a member of the thrombospondin type 1 repeat supergene family. In addition, the protein contains a furin-like cysteine-rich region. Furin-like repeat domains have been found in a variety of eukaryotic proteins involved in the mechanism of signal transduction by receptor tyrosine kinases.
Synonyms:	CRISTIN1; PWTSR; THSD2
Note:	Immunogen Sequence Homology: Dog: 100%; Pig: 100%; Rat: 100%; Horse: 100%; Human: 100%; Mouse: 100%; Rabbit: 100%; Guinea pig: 100%; Bovine: 92%



[View online »](#)

Protein Families: Druggable Genome, Secreted Protein

### Product images:



Host: Rabbit; Target Name: RSPO3; Sample Tissue: HT1080 Whole Cell lysates; Antibody Dilution: 1.0 ug/ml