

Product datasheet for **TA343017**

CBR4 Rabbit Polyclonal Antibody

Product data:

Product Type:	Primary Antibodies
Applications:	WB
Recommended Dilution:	WB
Reactivity:	Human
Host:	Rabbit
Isotype:	IgG
Clonality:	Polyclonal
Immunogen:	The immunogen for anti-CBR4 antibody: synthetic peptide directed towards the N terminal of human CBR4. Synthetic peptide located within the following region: RKGYRLAVIARNLEGAKAAAGDLGGDHLAFSCDVAKEHDVQNTFEELEKH
Formulation:	Liquid. Purified antibody supplied in 1x PBS buffer with 0.09% (w/v) sodium azide and 2% sucrose. <i>Note that this product is shipped as lyophilized powder to China customers.</i>
Conjugation:	Unconjugated
Storage:	Store at -20°C as received.
Stability:	Stable for 12 months from date of receipt.
Predicted Protein Size:	25 kDa
Gene Name:	carbonyl reductase 4
Database Link:	NP_116172 Entrez Gene 84869 Human Q8N4T8
Background:	The heterotetramer with HSD17B8 has NADH-dependent 3-ketoacyl-acyl carrier protein reductase activity. May play a role in biosynthesis of fatty acids in mitochondria. The homotetramer may act as NADPH-dependent quinone reductase. It has broad substrate specificity and reduces 9,10-phenanthrenequinone, 1,4-benzoquinone and various other o-quinones and p-quinones (in vitro).
Synonyms:	SDR45C1

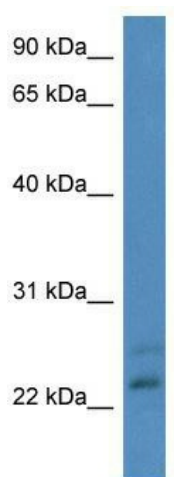


[View online »](#)

Note: Immunogen Sequence Homology: Pig: 100%; Rat: 100%; Human: 100%; Bovine: 100%; Guinea pig: 100%; Dog: 93%; Horse: 93%; Rabbit: 93%; Mouse: 79%

Protein Families: Druggable Genome

Product images:



WB Suggested Anti-CBR4 Antibody Titration: 0.2-1 ug/ml; ELISA Titer: 1:62500; Positive Control: Human kidney