

Product datasheet for **TA343016**

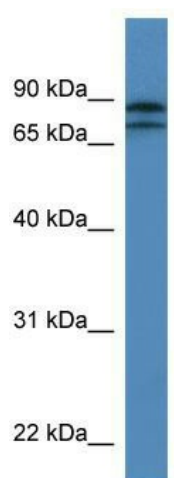
KLHL22 Rabbit Polyclonal Antibody

Product data:

Product Type:	Primary Antibodies
Applications:	WB
Recommended Dilution:	WB
Reactivity:	Human
Host:	Rabbit
Isotype:	IgG
Clonality:	Polyclonal
Immunogen:	The immunogen for anti-KLHL22 antibody: synthetic peptide directed towards the N terminal of human KLHL22. Synthetic peptide located within the following region: ILKNFVAFSRTDKYRQLPLEKVYSLSSNRLEVSCETEVYEGALLYHYSL
Formulation:	Liquid. Purified antibody supplied in 1x PBS buffer with 0.09% (w/v) sodium azide and 2% sucrose.
Conjugation:	Unconjugated
Storage:	Store at -20°C as received.
Stability:	Stable for 12 months from date of receipt.
Predicted Protein Size:	72 kDa
Gene Name:	kelch like family member 22
Database Link:	NP_116164 Entrez Gene 84861 Human Q53GT1
Background:	KLHL22 is a substrate-specific adapter of a BCR (BTB-CUL3-RBX1) E3 ubiquitin ligase complex required for cell division. BCR E3 ubiquitin ligase complexes mediate the ubiquitination of target proteins.
Synonyms:	KELCHL
Note:	Immunogen Sequence Homology: Dog: 100%; Pig: 100%; Rat: 100%; Horse: 100%; Human: 100%; Mouse: 100%; Bovine: 100%; Guinea pig: 93%



[View online »](#)

Product images:


WB Suggested Anti-KLHL22 Antibody Titration:
0.2-1 ug/ml; ELISA Titer: 1:312500; Positive
Control: Jurkat cell lysate