

## Product datasheet for **TA343015**

### HPDL Rabbit Polyclonal Antibody

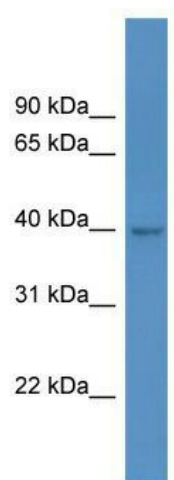
#### Product data:

Product Type:	Primary Antibodies
Applications:	WB
Recommended Dilution:	WB
Reactivity:	Human
Host:	Rabbit
Isotype:	IgG
Clonality:	Polyclonal
Immunogen:	The immunogen for anti-HPDL antibody: synthetic peptide directed towards the C terminal of human HPDL. Synthetic peptide located within the following region: GPGLQHVGLYTPNIVEATEGVATAGGQFLAPPGAYYQQPGKERQIRAAGH
Formulation:	Liquid. Purified antibody supplied in 1x PBS buffer with 0.09% (w/v) sodium azide and 2% sucrose. <i>Note that this product is shipped as lyophilized powder to China customers.</i>
Conjugation:	Unconjugated
Storage:	Store at -20°C as received.
Stability:	Stable for 12 months from date of receipt.
Predicted Protein Size:	39 kDa
Gene Name:	4-hydroxyphenylpyruvate dioxygenase like
Database Link:	<a href="#">NP_116145</a> <a href="#">Entrez Gene 84842 Human</a> <a href="#">Q96IR7</a>
Background:	HPDL may have dioxygenase activity.
Synonyms:	4-HPPD-L; GLOXD1
Note:	Immunogen Sequence Homology: Human: 100%; Dog: 93%; Rat: 93%; Pig: 86%; Horse: 86%; Mouse: 86%; Bovine: 86%; Guinea pig: 86%; Rabbit: 79%



[View online »](#)

## Product images:



WB Suggested Anti-HPDL Antibody; Titration: 1.0 ug/ml; Positive Control: 293T Whole Cell