

Product datasheet for **TA343014**

SFT2C (SFT2D3) Rabbit Polyclonal Antibody

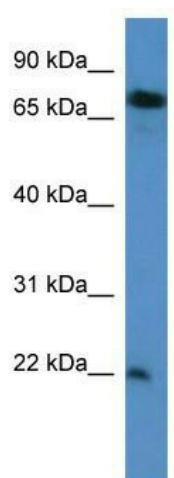
Product data:

Product Type:	Primary Antibodies
Applications:	WB
Recommended Dilution:	WB
Reactivity:	Human
Host:	Rabbit
Isotype:	IgG
Clonality:	Polyclonal
Immunogen:	The immunogen for anti-SFT2D3 antibody: synthetic peptide directed towards the N terminal of human SFT2D3. Synthetic peptide located within the following region: EYLAQGKAGGPAAAPELLAAEKAEPPGDRPAEEWLGRAGLRWTWARSPAE
Formulation:	Liquid. Purified antibody supplied in 1x PBS buffer with 0.09% (w/v) sodium azide and 2% sucrose.
Conjugation:	Unconjugated
Storage:	Store at -20°C as received.
Stability:	Stable for 12 months from date of receipt.
Predicted Protein Size:	22 kDa
Gene Name:	SFT2 domain containing 3
Database Link:	NP_116129 Entrez Gene 84826 Human Q587I9
Background:	SFT2D3 may be involved in fusion of retrograde transport vesicles derived from an endocytic compartment with the Golgi complex .
Synonyms:	MGC5391
Note:	Immunogen Sequence Homology: Human: 100%; Yeast
Protein Families:	Transmembrane



[View online »](#)

Product images:



WB Suggested Anti-SFT2D3 Antibody Titration:
0.2-1 ug/ml; ELISA Titer: 1:312500; Positive
Control: Jurkat cell lysate