

## Product datasheet for **TA343013**

### RTN4IP1 Rabbit Polyclonal Antibody

#### Product data:

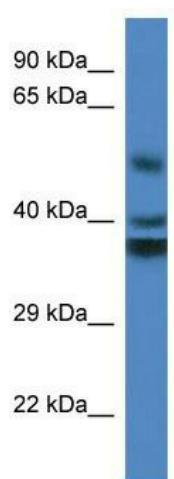
Product Type:	Primary Antibodies
Applications:	WB
Recommended Dilution:	WB
Reactivity:	Human
Host:	Rabbit
Isotype:	IgG
Clonality:	Polyclonal
Immunogen:	The immunogen for anti-RTN4IP1 antibody: synthetic peptide directed towards the middle region of human RTN4IP1. Synthetic peptide located within the following region: AWSAINKVGGLNDKNCTGKRVLILGASGGVGTFAIQVMKAWDAHVTAVCS
Formulation:	Liquid. Purified antibody supplied in 1x PBS buffer with 0.09% (w/v) sodium azide and 2% sucrose. <i>Note that this product is shipped as lyophilized powder to China customers.</i>
Conjugation:	Unconjugated
Storage:	Store at -20°C as received.
Stability:	Stable for 12 months from date of receipt.
Predicted Protein Size:	39 kDa
Gene Name:	reticulon 4 interacting protein 1
Database Link:	<a href="#">NP_116119</a> <a href="#">Entrez Gene 84816 Human</a> <a href="#">Q8WWV3</a>
Background:	This gene encodes a novel mitochondrial protein that interacts with reticulon 4, which is a potent inhibitor of regeneration following spinal cord injury. The interaction of reticulon 4 with mitochondrial proteins may provide insight into the mechanisms for reticulon-induced inhibition of neurite growth.
Synonyms:	NIMP; OPA10
Note:	Immunogen Sequence Homology: Dog: 100%; Horse: 100%; Human: 100%; Rabbit: 100%; Pig: 93%; Rat: 93%; Bovine: 93%; Guinea pig: 86%; Mouse: 79%



[View online »](#)

Protein Families: Druggable Genome

### Product images:



WB Suggested Anti-RTN4IP1 Antibody; Titration:  
1.0 ug/ml; Positive Control: Fetal Kidney