

Product datasheet for **TA343011**

TBRG1 Rabbit Polyclonal Antibody

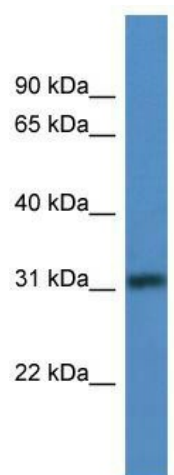
Product data:

Product Type:	Primary Antibodies
Applications:	WB
Recommended Dilution:	WB
Reactivity:	Human
Host:	Rabbit
Isotype:	IgG
Clonality:	Polyclonal
Immunogen:	The immunogen for anti-TBRG1 antibody: synthetic peptide directed towards the N terminal of human TBRG1. Synthetic peptide located within the following region: KARMKKLPKKSQNEKYRLKYLRLRKAATVFENAAICDEIARLEEKFLK
Formulation:	Liquid. Purified antibody supplied in 1x PBS buffer with 0.09% (w/v) sodium azide and 2% sucrose. <i>Note that this product is shipped as lyophilized powder to China customers.</i>
Conjugation:	Unconjugated
Storage:	Store at -20°C as received.
Stability:	Stable for 12 months from date of receipt.
Predicted Protein Size:	29 kDa
Gene Name:	transforming growth factor beta regulator 1
Database Link:	NP_116200 Entrez Gene 84897 Human Q3YBR2
Background:	The function of this protein remains unknown.
Synonyms:	NIAM; TB-5
Note:	Immunogen Sequence Homology: Dog: 100%; Pig: 100%; Rat: 100%; Horse: 100%; Human: 100%; Bovine: 100%; Rabbit: 100%; Guinea pig: 100%; Mouse: 93%; Zebrafish: 85%



[View online »](#)

Product images:



WB Suggested Anti-TBRG1 Antibody Titration: 0.2-1 ug/ml; ELISA Titer: 1:312500; Positive Control: Human Lung