

Product datasheet for **TA343010**

TBRG1 Rabbit Polyclonal Antibody

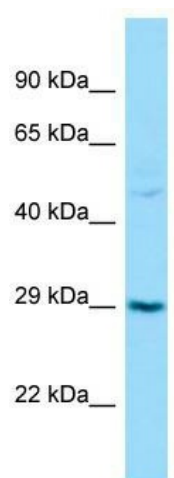
Product data:

Product Type:	Primary Antibodies
Applications:	WB
Recommended Dilution:	WB
Reactivity:	Human
Host:	Rabbit
Isotype:	IgG
Clonality:	Polyclonal
Immunogen:	The immunogen for anti-TBRG1 antibody is: synthetic peptide directed towards the C-terminal region of Human TBRG1. Synthetic peptide located within the following region: DVCKPGDGQLPEGLPENDAAMSFEAFQRQIFDEDQNDPLLPGLDLPELQ
Formulation:	Liquid. Purified antibody supplied in 1x PBS buffer with 0.09% (w/v) sodium azide and 2% sucrose. <i>Note that this product is shipped as lyophilized powder to China customers.</i>
Purification:	Affinity Purified
Conjugation:	Unconjugated
Storage:	Store at -20°C as received.
Stability:	Stable for 12 months from date of receipt.
Predicted Protein Size:	29 kDa
Gene Name:	transforming growth factor beta regulator 1
Database Link:	NP_116200 Entrez Gene 84897 Human Q3YBR2
Background:	TBRG1 acts as a growth inhibitor. It can activate p53/TP53, causes G1 arrest and collaborates with CDKN2A to restrict proliferation, but does not require either protein to inhibit DNA synthesis. TBRG1 redistributes CDKN2A into the nucleoplasm and is involved in maintaining chromosomal stability.
Synonyms:	NIAM; TB-5
Note:	Immunogen Sequence Homology: Human: 100%; Pig: 85%; Horse: 85%; Rabbit: 85%; Rat



[View online »](#)

Product images:



Host: Rabbit; Target Name: TBRG1; Sample
Tissue: Fetal Spleen lysates; Antibody Dilution: 1.0
ug/ml