

Product datasheet for **TA343009**

HSDL1 Rabbit Polyclonal Antibody

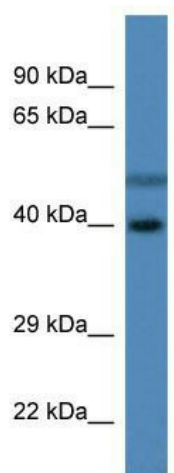
Product data:

Product Type:	Primary Antibodies
Applications:	WB
Recommended Dilution:	WB
Reactivity:	Human
Host:	Rabbit
Isotype:	IgG
Clonality:	Polyclonal
Immunogen:	The immunogen for anti-HSDL1 antibody: synthetic peptide directed towards the C terminal of human HSDL1. Synthetic peptide located within the following region: STLGISKRTTGYWSHSIQFLFAQYMPPEWLWVWGANILNRSRKEALSCTA
Formulation:	Liquid. Purified antibody supplied in 1x PBS buffer with 0.09% (w/v) sodium azide and 2% sucrose. <i>Note that this product is shipped as lyophilized powder to China customers.</i>
Conjugation:	Unconjugated
Storage:	Store at -20°C as received.
Stability:	Stable for 12 months from date of receipt.
Predicted Protein Size:	37 kDa
Gene Name:	hydroxysteroid dehydrogenase like 1
Database Link:	NP_113651 Entrez Gene 83693 Human Q3SXM5
Background:	The function remains unknown.
Synonyms:	SDR12C3
Note:	Immunogen Sequence Homology: Pig: 100%; Rat: 100%; Human: 100%; Guinea pig: 100%; Dog: 93%; Horse: 93%; Mouse: 93%; Bovine: 93%; Rabbit: 83%
Protein Families:	Druggable Genome



[View online »](#)

Product images:



WB Suggested Anti-HSDL1 Antibody; Titration: 1.0 ug/ml; Positive Control: Fetal Liver