

Product datasheet for **TA343007**

CD99L2 Rabbit Polyclonal Antibody

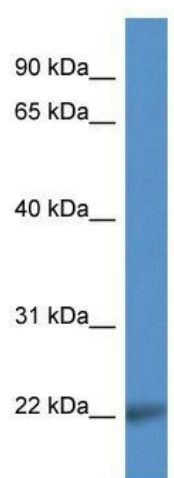
Product data:

Product Type:	Primary Antibodies
Applications:	WB
Recommended Dilution:	WB
Reactivity:	Human
Host:	Rabbit
Isotype:	IgG
Clonality:	Polyclonal
Immunogen:	The immunogen for anti-CD99L2 antibody: synthetic peptide directed towards the middle region of human CD99L2. Synthetic peptide located within the following region: RNRDDGRRKPIAGGGGFSDKDLEDIVGGGEYKPKGKGDGRYGSNDDPG
Formulation:	Liquid. Purified antibody supplied in 1x PBS buffer with 0.09% (w/v) sodium azide and 2% sucrose. <i>Note that this product is shipped as lyophilized powder to China customers.</i>
Conjugation:	Unconjugated
Storage:	Store at -20°C as received.
Stability:	Stable for 12 months from date of receipt.
Predicted Protein Size:	23 kDa
Gene Name:	CD99 molecule like 2
Database Link:	NP_604395 Entrez Gene 83692 Human Q8TCZ2
Background:	The function remains unknown.
Synonyms:	CD99B; MIC2L1
Note:	Immunogen Sequence Homology: Horse: 100%; Human: 100%; Bovine: 100%; Dog: 93%; Pig: 93%; Rat: 92%; Guinea pig: 91%; Mouse: 86%; Rabbit: 86%
Protein Families:	Transmembrane



[View online »](#)

Product images:



WB Suggested Anti-CD99L2 Antibody; Titration:
1.0 ug/ml; Positive Control: PANC1 Whole Cell