

Product datasheet for **TA343006**

SES2 Rabbit Polyclonal Antibody

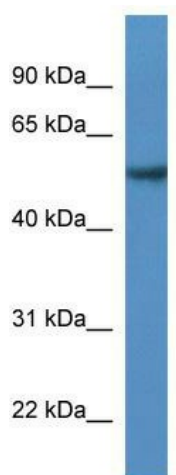
Product data:

Product Type:	Primary Antibodies
Applications:	WB
Recommended Dilution:	WB
Reactivity:	Human
Host:	Rabbit
Isotype:	IgG
Clonality:	Polyclonal
Immunogen:	The immunogen for anti-SES2 antibody: synthetic peptide directed towards the N terminal of human SES2. Synthetic peptide located within the following region: LKDYLRFPAGGVGDSGPGEEQRESRARRGPRGPSAFIPVEEVLREGAESL
Formulation:	Liquid. Purified antibody supplied in 1x PBS buffer with 0.09% (w/v) sodium azide and 2% sucrose. <i>Note that this product is shipped as lyophilized powder to China customers.</i>
Conjugation:	Unconjugated
Storage:	Store at -20°C as received.
Stability:	Stable for 12 months from date of receipt.
Predicted Protein Size:	54 kDa
Gene Name:	sestrin 2
Database Link:	NP_113647 Entrez Gene 83667 Human P58004
Background:	This gene encodes a member of the sestrin family of PA26-related proteins. The encoded protein may function in the regulation of cell growth and survival. This protein may be involved in cellular response to different stress conditions.
Synonyms:	HI95; SES2; SEST2
Note:	Immunogen Sequence Homology: Pig: 100%; Human: 100%; Dog: 93%; Horse: 88%; Bovine: 86%; Guinea pig: 86%
Protein Pathways:	p53 signaling pathway



[View online »](#)

Product images:



WB Suggested Anti-SESN2 Antibody Titration: 0.2-1 ug/ml; ELISA Titer: 1:62500; Positive Control: MCF7 cell lysate