

Product datasheet for **TA343005**

LONP2 Rabbit Polyclonal Antibody

Product data:

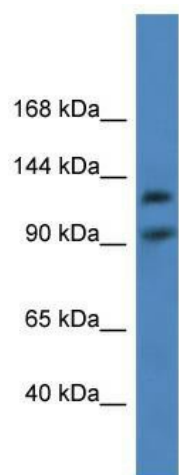
Product Type:	Primary Antibodies
Applications:	WB
Recommended Dilution:	WB
Reactivity:	Human
Host:	Rabbit
Isotype:	IgG
Clonality:	Polyclonal
Immunogen:	The immunogen for anti-LONP2 antibody: synthetic peptide directed towards the C terminal of human LONP2. Synthetic peptide located within the following region: AICRAVAVKVAEGQHKEAKLDRSDVTEREGCREHILEDEKPESISDTTDL
Formulation:	Liquid. Purified antibody supplied in 1x PBS buffer with 0.09% (w/v) sodium azide and 2% sucrose. <i>Note that this product is shipped as lyophilized powder to China customers.</i>
Conjugation:	Unconjugated
Storage:	Store at -20°C as received.
Stability:	Stable for 12 months from date of receipt.
Predicted Protein Size:	94 kDa
Gene Name:	lon peptidase 2, peroxisomal
Database Link:	NP_113678 Entrez Gene 83752 Human Q86WA8
Background:	LONP2 is an ATP-dependent serine protease that mediates the selective degradation of misfolded and unassembled polypeptides in the peroxisomal matrix. It is necessary for type 2 peroxisome targeting signal (PTS2)-containing protein processing and facilitates peroxisome matrix protein import
Synonyms:	LONP; LONPL
Note:	Immunogen Sequence Homology: Human: 100%; Dog: 93%; Rat: 93%; Horse: 86%; Mouse: 86%



[View online »](#)

Protein Families: Druggable Genome, Protease

Product images:



WB Suggested Anti-LONP2 Antibody Titration:
0.2-1 ug/ml; ELISA Titer: 1:312500; Positive
Control: Human brain