

Product datasheet for **TA343004**

RIOK1 Rabbit Polyclonal Antibody

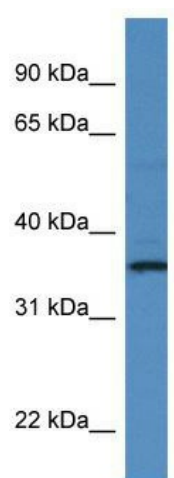
Product data:

Product Type:	Primary Antibodies
Applications:	WB
Recommended Dilution:	WB
Reactivity:	Human
Host:	Rabbit
Isotype:	IgG
Clonality:	Polyclonal
Immunogen:	The immunogen for anti-RIOK1 antibody: synthetic peptide directed towards the C terminal of human RIOK1. Synthetic peptide located within the following region: KDLSGVQKVPALLENQVEERTCSDSEDIGSSECSDTDSEEQGDHARPKKH
Formulation:	Liquid. Purified antibody supplied in 1x PBS buffer with 0.09% (w/v) sodium azide and 2% sucrose. <i>Note that this product is shipped as lyophilized powder to China customers.</i>
Conjugation:	Unconjugated
Storage:	Store at -20°C as received.
Stability:	Stable for 12 months from date of receipt.
Predicted Protein Size:	38 kDa
Gene Name:	RIO kinase 1
Database Link:	NP_694550 Entrez Gene 83732 Human Q9BRS2
Background:	This gene includes two alternatively spliced transcript variants, which encode different isoforms. The function of this gene has not been determined.
Synonyms:	AD034; bA288G3.1; RRP10
Note:	Immunogen Sequence Homology: Human: 100%; Horse: 79%
Protein Families:	Druggable Genome, Protein Kinase



[View online »](#)

Product images:



WB Suggested Anti-RIOK1 Antibody; Titration: 1.0 ug/ml; Positive Control: PANC1 Whole Cell