

Product datasheet for **TA343003**

TUBA6 (TUBA1C) Rabbit Polyclonal Antibody

Product data:

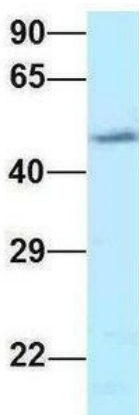
Product Type:	Primary Antibodies
Applications:	WB
Recommended Dilution:	WB
Reactivity:	Human
Host:	Rabbit
Isotype:	IgG
Clonality:	Polyclonal
Immunogen:	The immunogen for anti-TUBA1C antibody: synthetic peptide directed towards the C terminal of human TUBA1C. Synthetic peptide located within the following region: HKFDLMYAKRAFWHWYVGGEGMEEGEFSEAREDMAALEKDYEEVGADSADG
Formulation:	Liquid. Purified antibody supplied in 1x PBS buffer with 0.09% (w/v) sodium azide and 2% sucrose. <i>Note that this product is shipped as lyophilized powder to China customers.</i>
Conjugation:	Unconjugated
Storage:	Store at -20°C as received.
Stability:	Stable for 12 months from date of receipt.
Predicted Protein Size:	50 kDa
Gene Name:	tubulin alpha 1c
Database Link:	NP_116093 Entrez Gene 84790 Human Q9BQE3
Background:	Tubulin is the major constituent of microtubules. It binds two moles of GTP, one at an exchangeable site on the beta chain and one at a non-exchangeable site on the alpha-chain.
Synonyms:	bcm948; TUBA6
Note:	Immunogen Sequence Homology: Rat: 100%; Human: 100%; Dog: 93%; Pig: 93%; Horse: 93%; Mouse: 93%; Bovine: 93%; Rabbit: 93%; Guinea pig: 93%
Protein Pathways:	Gap junction, Pathogenic Escherichia coli infection



[View online »](#)

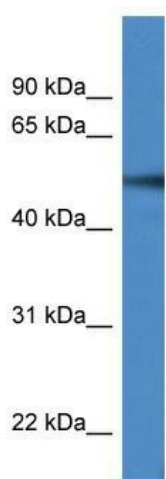
Product images:

TUBA1C



Rabbit Anti-TUBA1C
 Sample Type: Human Adult Placenta
 Antibody Concentration: 1ug/mL

Host: Rabbit; Target Name: TUBA1C; Sample Tissue: Human Adult Placenta; Antibody Dilution: 1.0 ug/ml



WB Suggested Anti-TUBA1C Antibody Titration: 0.2-1 ug/ml; ELISA Titer: 1:62500; Positive Control: Jurkat cell lysate TUBA1C is strongly supported by BioGPS gene expression data to be expressed in Human Jurkat cells