

## Product datasheet for **TA343002**

### CNDP1 Rabbit Polyclonal Antibody

#### Product data:

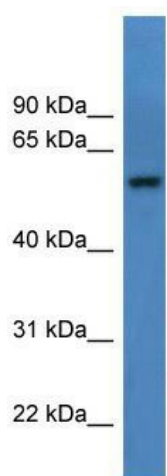
Product Type:	Primary Antibodies
Applications:	WB
Recommended Dilution:	WB
Reactivity:	Human
Host:	Rabbit
Isotype:	IgG
Clonality:	Polyclonal
Immunogen:	The immunogen for anti-CNDP1 antibody: synthetic peptide directed towards the C terminal of human CNDP1. Synthetic peptide located within the following region: GSTIPIAKMFQEIVHKSVLPLGAVDDGEHSQNEKINRWNYIEGTLFA
Formulation:	Liquid. Purified antibody supplied in 1x PBS buffer with 0.09% (w/v) sodium azide and 2% sucrose. <i>Note that this product is shipped as lyophilized powder to China customers.</i>
Conjugation:	Unconjugated
Storage:	Store at -20°C as received.
Stability:	Stable for 12 months from date of receipt.
Predicted Protein Size:	57 kDa
Gene Name:	carnosine dipeptidase 1
Database Link:	<a href="#">NP_116038</a> <a href="#">Entrez Gene 84735 Human</a> <a href="#">Q96KN2</a>
Background:	CNDP1 is a member of the M20 metalloprotease family. The protein is specifically expressed in the brain, is a homodimeric dipeptidase which was identified as human carnosinase. CNDP1 gene contains trinucleotide (CTG) repeat length polymorphism in the coding region.
Synonyms:	CN1; CPGL2; HsT2308
Note:	Immunogen Sequence Homology: Pig: 100%; Rat: 100%; Human: 100%; Mouse: 100%; Bovine: 100%; Rabbit: 100%; Dog: 93%; Horse: 93%; Guinea pig
Protein Families:	Protease, Secreted Protein



[View online »](#)

Protein Pathways: beta-Alanine metabolism, Histidine metabolism, Metabolic pathways

### Product images:



WB Suggested Anti-CNDP1 Antibody Titration:  
0.2-1 ug/ml; ELISA Titer: 1:312500; Positive  
Control: Jurkat cell lysate