

Product datasheet for **TA343000**

SPSB2 Rabbit Polyclonal Antibody

Product data:

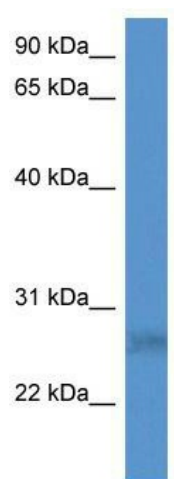
Product Type:	Primary Antibodies
Applications:	IHC, WB
Recommended Dilution:	IHC, WB
Reactivity:	Human, Macaque
Host:	Rabbit
Isotype:	IgG
Clonality:	Polyclonal
Immunogen:	The immunogen for anti-SPSB2 antibody: synthetic peptide directed towards the N terminal of human SPSB2. Synthetic peptide located within the following region: KDCSENIEVKEGGLYFERRPVAQSTDGARGKRGYSRGLHAWAISWPLEQR
Formulation:	Liquid. Purified antibody supplied in 1x PBS buffer with 0.09% (w/v) sodium azide and 2% sucrose. <i>Note that this product is shipped as lyophilized powder to China customers.</i>
Conjugation:	Unconjugated
Storage:	Store at -20°C as received.
Stability:	Stable for 12 months from date of receipt.
Predicted Protein Size:	28 kDa
Gene Name:	splA/ryanodine receptor domain and SOCS box containing 2
Database Link:	NP_116030 Entrez Gene 84727 Human Q99619
Background:	This gene encodes a suppressor of cytokine signaling (SOCS) family member, and it belongs to the subfamily of proteins containing a central SPRY (repeats in splA and RyR) domain and a C-terminal SOCS box. This gene is present in a gene-rich cluster on chromosome 12p13 in the vicinity of the CD4 antigen and triosephosphate isomerase genes.
Synonyms:	GRCC9; SSB2
Note:	Immunogen Sequence Homology: Pig: 100%; Human: 100%; Bovine: 100%; Rabbit: 100%; Guinea pig: 100%; Dog: 93%; Rat: 93%; Mouse: 93%; Zebrafish: 79%



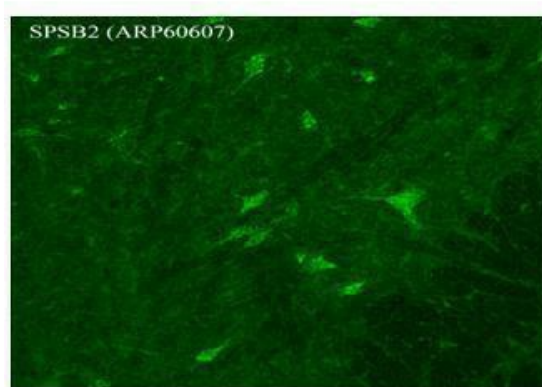
[View online »](#)

Protein Families: Druggable Genome

Product images:



SPSB2



Green: SPSB2

WB Suggested Anti-SPSB2 Antibody Titration: 0.2-1 ug/ml; ELISA Titer: 1:312500; Positive Control: HepG2 cell lysate

Sample Type: Rhesus macaque spinal cord
Primary Antibody Dilution: 1:300 Secondary Antibody: Donkey anti Rabbit 488 Secondary Antibody Dilution: 1:500 Color/Signal
Descriptions: Green: SPSB2 Gene Name: SPSB2
Submitted by: Timur Mavlyutov, Ph. D., Departme