

Product datasheet for **TA342999**

KRTAP1-5 Rabbit Polyclonal Antibody

Product data:

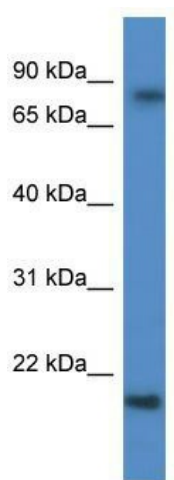
Product Type:	Primary Antibodies
Applications:	WB
Recommended Dilution:	WB
Reactivity:	Human
Host:	Rabbit
Isotype:	IgG
Clonality:	Polyclonal
Immunogen:	The immunogen for anti-KRTAP1-5 antibody: synthetic peptide directed towards the C terminal of human KRTAP1-5. Synthetic peptide located within the following region: TGCGIGGGISYGQEGSSGAVSTRIRWCRPDSRVEGTYLPPCCVVSCTPPS
Formulation:	Liquid. Purified antibody supplied in 1x PBS buffer with 0.09% (w/v) sodium azide and 2% sucrose.
Conjugation:	Unconjugated
Storage:	Store at -20°C as received.
Stability:	Stable for 12 months from date of receipt.
Predicted Protein Size:	18 kDa
Gene Name:	keratin associated protein 1-5
Database Link:	NP_114163 Entrez Gene 83895 Human Q9BYS1
Background:	This protein is a member of the keratin-associated protein (KAP) family. The KAP proteins form a matrix of keratin intermediate filaments which contribute to the structure of hair fibers. KAP family members appear to have unique, family-specific amino- and carboxyl-terminal regions and are subdivided into three multi-gene families according to amino acid composition: the high sulfur, the ultrahigh sulfur, and the high tyrosine/glycine KAPs. This protein is a member of the high sulfur KAP family and the gene is localized to a cluster of KAPs at 17q12-q21.
Synonyms:	KAP1.5; KRTAP1.5



[View online »](#)

Note: Immunogen Sequence Homology: Human: 100%; Pig: 92%; Rat: 92%; Goat: 92%; Horse: 92%; Sheep: 92%; Bovine: 92%; Rabbit: 92%; Guinea pig: 92%; Mouse: 86%

Product images:



WB Suggested Anti-KRTAP1-5 Antibody; Titration: 1.0 ug/ml; Positive Control: Fetal Brain