

Product datasheet for **TA342998**

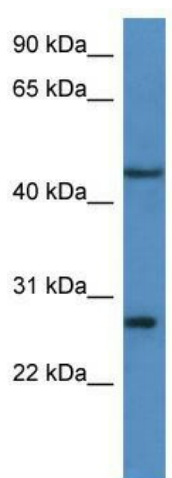
FGFBP2 Rabbit Polyclonal Antibody

Product data:

| | |
|-------------------------|--|
| Product Type: | Primary Antibodies |
| Applications: | WB |
| Recommended Dilution: | WB |
| Reactivity: | Human |
| Host: | Rabbit |
| Isotype: | IgG |
| Clonality: | Polyclonal |
| Immunogen: | The immunogen for anti-FGFBP2 antibody: synthetic peptide directed towards the C terminal of human FGFBP2. Synthetic peptide located within the following region: LGKAKPTTRPTAKPTQPGPRPGGNEEAKKKAWEHWCWKPQALCAFLISFF |
| Formulation: | Liquid. Purified antibody supplied in 1x PBS buffer with 0.09% (w/v) sodium azide and 2% sucrose. <i>Note that this product is shipped as lyophilized powder to China customers.</i> |
| Conjugation: | Unconjugated |
| Storage: | Store at -20°C as received. |
| Stability: | Stable for 12 months from date of receipt. |
| Predicted Protein Size: | 24 kDa |
| Gene Name: | fibroblast growth factor binding protein 2 |
| Database Link: | NP_114156 Entrez Gene 83888 Human Q9BYJ0 |
| Background: | FGFBP2 is a member of the fibroblast growth factor binding protein family. The encoded protein is a serum protein that is selectively secreted by cytotoxic lymphocytes and may be involved in cytotoxic lymphocyte-mediated immunity. An increase in the amount of gene product may be associated with atopic asthma and mild extrinsic asthma. |
| Synonyms: | HBP17RP; KSP37 |
| Note: | Immunogen Sequence Homology: Human: 100% |
| Protein Families: | Secreted Protein |



[View online »](#)

Product images:

WB Suggested Anti-FGFBP2 Antibody Titration:
0.2-1 ug/ml; ELISA Titer: 1:312500; Positive
Control: Hela cell lysate