

## Product datasheet for **TA342997**

### TM2D2 Rabbit Polyclonal Antibody

#### Product data:

Product Type:	Primary Antibodies
Applications:	WB
Recommended Dilution:	WB
Reactivity:	Human
Host:	Rabbit
Isotype:	IgG
Clonality:	Polyclonal
Immunogen:	The immunogen for anti-TM2D2 antibody: synthetic peptide directed towards the middle region of human TM2D2. Synthetic peptide located within the following region: QELGYGCLKFGGQAYSDVEHTSVQCHALDGI ECASPRTFLRENKPCIKYT
Formulation:	Liquid. Purified antibody supplied in 1x PBS buffer with 0.09% (w/v) sodium azide and 2% sucrose. <i>Note that this product is shipped as lyophilized powder to China customers.</i>
Conjugation:	Unconjugated
Storage:	Store at -20°C as received.
Stability:	Stable for 12 months from date of receipt.
Predicted Protein Size:	23 kDa
Gene Name:	TM2 domain containing 2
Database Link:	<a href="#">NP_510882</a> <a href="#">Entrez Gene 83877 Human Q9BX73</a>
Background:	The protein encoded by this gene contains a structural module related to that of the seven transmembrane domain G protein-coupled receptor superfamily. This protein has sequence and structural similarities to the beta-amyloid binding protein (BBP), but, unlike BBP, it does not regulate a response to beta-amyloid peptide. This protein may have regulatory roles in cell death or proliferation signal cascades.
Synonyms:	BLP1

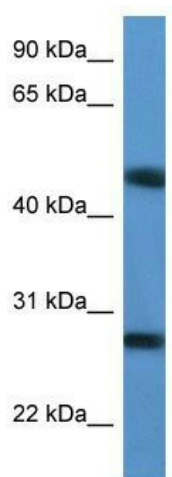


[View online »](#)

**Note:** Immunogen Sequence Homology: Pig: 100%; Rat: 100%; Human: 100%; Rabbit: 100%; Guinea pig: 100%; Dog: 93%; Goat: 92%; Horse: 92%; Mouse: 92%; Bovine: 92%; Zebrafish

**Protein Families:** Druggable Genome, Transmembrane

**Product images:**



WB Suggested Anti-TM2D2 Antibody Titration:  
0.2-1 ug/ml; ELISA Titer: 1:312500; Positive  
Control: Jurkat cell lysate