

Product datasheet for **TA342996**

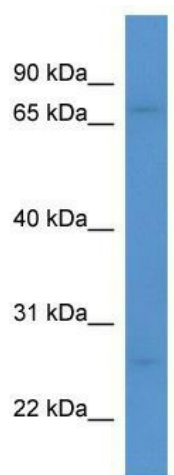
MRO Rabbit Polyclonal Antibody

Product data:

Product Type:	Primary Antibodies
Applications:	WB
Recommended Dilution:	WB
Reactivity:	Human
Host:	Rabbit
Isotype:	IgG
Clonality:	Polyclonal
Immunogen:	The immunogen for anti-MRO antibody: synthetic peptide directed towards the C terminal of human MRO. Synthetic peptide located within the following region: VAKACKTTFQACSPYLKLEEYSFQSEEDQRNTKLYQQLSHYHPEILQFF
Formulation:	Liquid. Purified antibody supplied in 1x PBS buffer with 0.09% (w/v) sodium azide and 2% sucrose. <i>Note that this product is shipped as lyophilized powder to China customers.</i>
Conjugation:	Unconjugated
Storage:	Store at -20°C as received.
Stability:	Stable for 12 months from date of receipt.
Predicted Protein Size:	30 kDa
Gene Name:	maestro
Database Link:	NP_001120648 Entrez Gene 83876 Human Q9BYG7
Background:	This gene is specifically transcribed in males before and after differentiation of testis, and the encoded protein may play an important role in a mammalian sex determination.
Synonyms:	B29; C18orf3
Note:	Immunogen Sequence Homology: Human: 100%; Mouse: 90%; Dog: 85%; Horse: 85%; Bovine: 85%; Rabbit: 85%; Rat



[View online »](#)

Product images:

WB Suggested Anti-MRO Antibody Titration: 0.2-1 ug/ml; ELISA Titer: 1:312500; Positive Control: Jurkat cell lysate