

Product datasheet for **TA342995**

BCO2 Rabbit Polyclonal Antibody

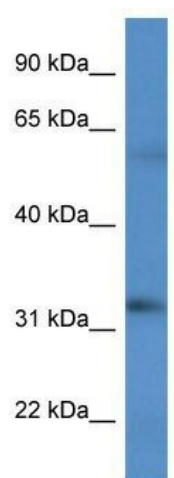
Product data:

Product Type:	Primary Antibodies
Applications:	WB
Recommended Dilution:	WB
Reactivity:	Human
Host:	Rabbit
Isotype:	IgG
Clonality:	Polyclonal
Immunogen:	The immunogen for anti-BCO2 antibody: synthetic peptide directed towards the C terminal of human BCO2. Synthetic peptide located within the following region: DNLSPLSYTSASAVKQADGTIWCSHENLHQEDLEKEGGIEFPQIYYDRFS
Formulation:	Liquid. Purified antibody supplied in 1x PBS buffer with 0.09% (w/v) sodium azide and 2% sucrose. <i>Note that this product is shipped as lyophilized powder to China customers.</i>
Conjugation:	Unconjugated
Storage:	Store at -20°C as received.
Stability:	Stable for 12 months from date of receipt.
Predicted Protein Size:	60 kDa
Gene Name:	beta-carotene oxygenase 2
Database Link:	NP_001032367 Entrez Gene 83875 Human Q9BYV7
Background:	The function remains unknown.
Synonyms:	B-DIOX-II; BCDO2
Note:	Immunogen Sequence Homology: Human: 100%; Rat: 93%; Mouse: 86%; Dog: 79%; Pig: 79%; Guinea pig: 79%



[View online »](#)

Product images:



WB Suggested Anti-BCO2 Antibody; Titration: 1.0 ug/ml; Positive Control: HT1080 Whole Cell