

Product datasheet for **TA342994**

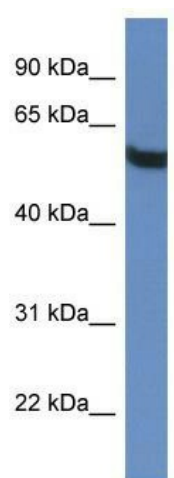
TBC1D10A Rabbit Polyclonal Antibody

Product data:

Product Type:	Primary Antibodies
Applications:	WB
Recommended Dilution:	WB
Reactivity:	Human
Host:	Rabbit
Isotype:	IgG
Clonality:	Polyclonal
Immunogen:	The immunogen for anti-TBC1D10A antibody: synthetic peptide directed towards the C terminal of human TBC1D10A. Synthetic peptide located within the following region: KAILDAEPGPRPALQPSPSIRLPLDAPLPGSKAKPKPPKQAQKEQRKQMK
Formulation:	Liquid. Purified antibody supplied in 1x PBS buffer with 0.09% (w/v) sodium azide and 2% sucrose.
Conjugation:	Unconjugated
Storage:	Store at -20°C as received.
Stability:	Stable for 12 months from date of receipt.
Predicted Protein Size:	57 kDa
Gene Name:	TBC1 domain family member 10A
Database Link:	NP_114143 Entrez Gene 83874 Human Q9BXI6
Background:	The function of this protein remains unknown.
Synonyms:	dj130H16.1; dj130H16.2; EPI64; TBC1D10
Note:	Immunogen Sequence Homology: Pig: 100%; Human: 100%; Guinea pig: 100%



[View online »](#)

Product images:


WB Suggested Anti-TBC1D10A Antibody Titration:
0.2-1 ug/ml; ELISA Titer: 1:1562500; Positive
Control: HepG2 cell lysate