

Product datasheet for **TA342992**

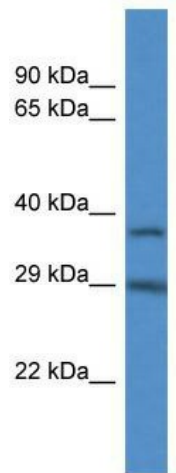
RAB34 Rabbit Polyclonal Antibody

Product data:

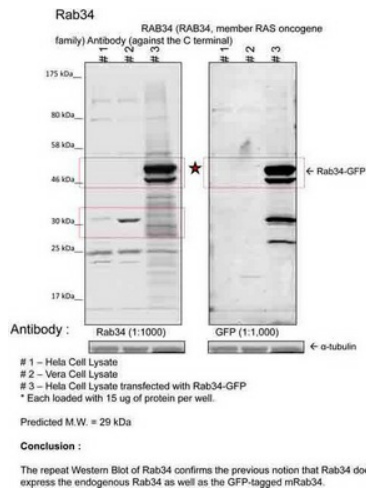
Product Type:	Primary Antibodies
Applications:	WB
Recommended Dilution:	WB
Reactivity:	Human, Mouse
Host:	Rabbit
Isotype:	IgG
Clonality:	Polyclonal
Immunogen:	The immunogen for anti-RAB34 antibody: synthetic peptide directed towards the C terminal of human RAB34. Synthetic peptide located within the following region: FFFRVAALTFEANVLAELEKSGARRIGDVVRINSDDSNLYLTASKKKPTC
Formulation:	Liquid. Purified antibody supplied in 1x PBS buffer with 0.09% (w/v) sodium azide and 2% sucrose. <i>Note that this product is shipped as lyophilized powder to China customers.</i>
Conjugation:	Unconjugated
Storage:	Store at -20°C as received.
Stability:	Stable for 12 months from date of receipt.
Predicted Protein Size:	29 kDa
Gene Name:	RAB34, member RAS oncogene family
Database Link:	NP_114140 Entrez Gene 19376 Mouse Entrez Gene 83871 Human P0DI83
Background:	RAB proteins, like RAB34, are small GTPases that regulate vesicle budding, docking, and fusion along endocytosis and exocytosis pathways.
Synonyms:	RAB39; RAH
Note:	Immunogen Sequence Homology: Rat: 100%; Human: 100%; Bovine: 100%; Dog: 93%; Pig: 93%; Horse: 93%; Guinea pig: 93%; Mouse: 92%; Rabbit: 86%
Protein Families:	Druggable Genome



[View online »](#)

Product images:


RAB34 antibody validated by WB using HepG2 cell lysate at 1 ug/ml.



Sample Type: 1. Human Cervical Cancer Cell Lysate (15ug); 2. Monkey Fibroblast Cell Lysate (15ug); Primary Dilution: 1:1000; Secondary Antibody: goat anti-Rabbit; Secondary Dilution: 1:40,000; Image Submitted by: Dr. Jakob Szvedo, Dr. Lupashin's Lab; Univ