

Product datasheet for **TA342991**

FSD1L Rabbit Polyclonal Antibody

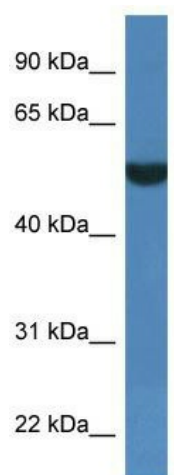
Product data:

Product Type:	Primary Antibodies
Applications:	WB
Recommended Dilution:	WB
Reactivity:	Human
Host:	Rabbit
Isotype:	IgG
Clonality:	Polyclonal
Immunogen:	The immunogen for anti-FSD1L antibody: synthetic peptide directed towards the C terminal of human FSD1L. Synthetic peptide located within the following region: KGQESKIKGKENKGRSGTSPKRTSVGSRPPAVRGSRRDRFTGESYTVLGD
Formulation:	Liquid. Purified antibody supplied in 1x PBS buffer with 0.09% (w/v) sodium azide and 2% sucrose. <i>Note that this product is shipped as lyophilized powder to China customers.</i>
Conjugation:	Unconjugated
Storage:	Store at -20°C as received.
Stability:	Stable for 12 months from date of receipt.
Predicted Protein Size:	56 kDa
Gene Name:	fibronectin type III and SPRY domain containing 1 like
Database Link:	NP_997530 Entrez Gene 83856 Human Q9BXM9
Background:	The function remains unknown.
Synonyms:	CCDC10; CSDUFD1; FSD1CL; FSD1NL; MIR1
Note:	Immunogen Sequence Homology: Dog: 100%; Pig: 100%; Rat: 100%; Horse: 100%; Human: 100%; Mouse: 100%; Bovine: 100%; Zebrafish: 100%; Guinea pig: 100%



[View online »](#)

Product images:



WB Suggested Anti-FSD1L Antibody; Titration: 1.0 ug/ml; Positive Control: THP-1 Whole Cell