

## Product datasheet for **TA342990**

### FSD1L Rabbit Polyclonal Antibody

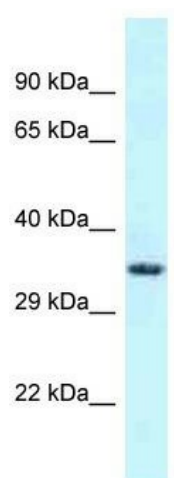
#### Product data:

Product Type:	Primary Antibodies
Applications:	WB
Recommended Dilution:	WB
Reactivity:	Human
Host:	Rabbit
Isotype:	IgG
Clonality:	Polyclonal
Immunogen:	The immunogen for anti-FSD1L antibody is: synthetic peptide directed towards the C-terminal region of Human FSD1L. Synthetic peptide located within the following region: TQPVLPGFMVWCGGLSLSTGMQVPSAVRTLQKSENGMTGSASSLNNVVTQ
Formulation:	Liquid. Purified antibody supplied in 1x PBS buffer with 0.09% (w/v) sodium azide and 2% sucrose. <i>Note that this product is shipped as lyophilized powder to China customers.</i>
Purification:	Affinity Purified
Conjugation:	Unconjugated
Storage:	Store at -20°C as received.
Stability:	Stable for 12 months from date of receipt.
Predicted Protein Size:	34 kDa
Gene Name:	fibronectin type III and SPRY domain containing 1 like
Database Link:	<a href="#">NP_001138785</a> <a href="#">Entrez Gene 83856 Human</a> <a href="#">Q9BXM9</a>
Background:	The function of this protein remains unknown.
Synonyms:	CCDC10; CSDUFD1; FSD1CL; FSD1NL; MIR1
Note:	Immunogen Sequence Homology: Dog: 100%; Pig: 100%; Rat: 100%; Horse: 100%; Human: 100%; Guinea pig: 100%; Mouse: 93%; Bovine: 86%; Rabbit: 86%



[View online »](#)

## Product images:



Host: Rabbit; Target Name: FSD1L; Sample  
Tissue: COLO205 Whole Cell lysates; Antibody  
Dilution: 1.0 ug/ml