

Product datasheet for **TA342989**

AKAP associated Sperm Protein (ROPN1L) Rabbit Polyclonal Antibody

Product data:

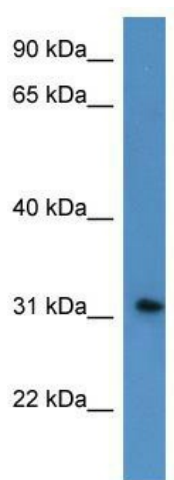
Product Type:	Primary Antibodies
Applications:	WB
Recommended Dilution:	WB
Reactivity:	Human
Host:	Rabbit
Isotype:	IgG
Clonality:	Polyclonal
Immunogen:	The immunogen for anti-ROPN1L antibody: synthetic peptide directed towards the N terminal of human ROPN1L. Synthetic peptide located within the following region: GYFSALSRGDPLPVKDRMEMPTATQKTDGLTQGLLKVLHKQCHHKRYVE
Formulation:	Liquid. Purified antibody supplied in 1x PBS buffer with 0.09% (w/v) sodium azide and 2% sucrose. <i>Note that this product is shipped as lyophilized powder to China customers.</i>
Conjugation:	Unconjugated
Storage:	Store at -20°C as received.
Stability:	Stable for 12 months from date of receipt.
Predicted Protein Size:	26 kDa
Gene Name:	rhophilin associated tail protein 1 like
Database Link:	NP_114122 Entrez Gene 83853 Human Q96C74
Background:	This gene encodes a member of the ropporin family. The encoded protein is a sperm protein. It interacts with A-kinase anchoring protein, AKAP3, through the amphipathic helix region of AKAP3. Type II regulatory subunit of cAMP-dependent protein kinase (PKARII) also binds to this helix domain of AKAP3, which allows PKARII to be targeted to specific subcellular compartments. It is suggested that sperm contains several proteins that bind to AKAPs in a manner similar to PKARII, and this encoded protein may be one of them.
Synonyms:	ASP; RSPH11



[View online »](#)

Note: Immunogen Sequence Homology: Rat: 100%; Human: 100%; Dog: 93%; Pig: 93%; Mouse: 93%; Bovine: 93%; Rabbit: 86%; Zebrafish: 86%; Guinea pig: 86%

Product images:



WB Suggested Anti-ROPN1L Antibody Titration:
0.2-1 ug/ml; ELISA Titer: 1:12500; Positive Control:
HepG2 cell lysate