

## Product datasheet for **TA342987**

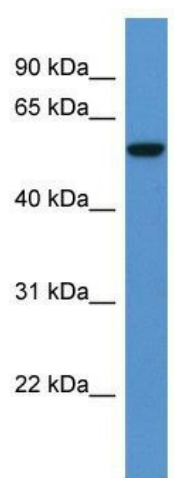
### FCAMR Rabbit Polyclonal Antibody

#### Product data:

Product Type:	Primary Antibodies
Applications:	WB
Recommended Dilution:	WB
Reactivity:	Human
Host:	Rabbit
Isotype:	IgG
Clonality:	Polyclonal
Immunogen:	The immunogen for anti-FCAMR antibody: synthetic peptide directed towards the C terminal of human FCAMR. Synthetic peptide located within the following region: ATLSQTPAVGPPWGPPESSVKRTFPEDESSRTLAPVSTMLALFMLMAL
Formulation:	Liquid. Purified antibody supplied in 1x PBS buffer with 0.09% (w/v) sodium azide and 2% sucrose. <i>Note that this product is shipped as lyophilized powder to China customers.</i>
Conjugation:	Unconjugated
Storage:	Store at -20°C as received.
Stability:	Stable for 12 months from date of receipt.
Predicted Protein Size:	62 kDa
Gene Name:	Fc fragment of IgA and IgM receptor
Database Link:	<a href="#">NP_001164102</a> <a href="#">Entrez Gene 83953 Human</a> <a href="#">Q8WWV6</a>
Background:	The function of this protein remains unknown.
Synonyms:	CD351; FCA; FKSG87; MR
Note:	Immunogen Sequence Homology: Human: 100%
Protein Families:	Druggable Genome, Transmembrane



[View online »](#)

**Product images:**

WB Suggested Anti-FCAMR Antibody Titration:  
0.2-1 ug/ml; ELISA Titer: 1:312500; Positive  
Control: Human Placenta