

## Product datasheet for **TA342985**

### IMMP2L Rabbit Polyclonal Antibody

#### Product data:

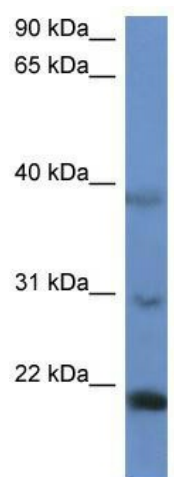
Product Type:	Primary Antibodies
Applications:	WB
Recommended Dilution:	WB
Reactivity:	Human
Host:	Rabbit
Isotype:	IgG
Clonality:	Polyclonal
Immunogen:	The immunogen for anti-IMMP2L antibody: synthetic peptide directed towards the N terminal of human IMMP2L. Synthetic peptide located within the following region: LNPGGSQSSDVLLNHWKVRNFEVHRGDIVSLVSPKNPEQKIIKRVIALE
Formulation:	Liquid. Purified antibody supplied in 1x PBS buffer with 0.09% (w/v) sodium azide and 2% sucrose. <i>Note that this product is shipped as lyophilized powder to China customers.</i>
Conjugation:	Unconjugated
Storage:	Store at -20°C as received.
Stability:	Stable for 12 months from date of receipt.
Predicted Protein Size:	20 kDa
Gene Name:	inner mitochondrial membrane peptidase subunit 2
Database Link:	<a href="#">NP_115938</a> <a href="#">Entrez Gene 83943 Human</a> <a href="#">Q96T52</a>
Background:	The mitochondrial inner membrane peptidase (IMP) complex generates mature, active proteins in the mitochondrial intermembrane space by proteolytically removing the mitochondrial targeting presequence of nuclear-encoded proteins. IMP1 (IMMP1L; MIM 612323) and IMP2 are the catalytic subunits of the IMP complex.
Synonyms:	IMMP2L-IT1; IMP2; IMP2-LIKE
Note:	Immunogen Sequence Homology: Pig: 100%; Rat: 100%; Horse: 100%; Human: 100%; Mouse: 100%; Bovine: 100%; Guinea pig: 100%; Zebrafish: 93%



[View online »](#)

Protein Families: Druggable Genome, Protease

### Product images:



WB Suggested Anti-IMMP2L Antibody Titration:  
0.2-1 ug/ml; ELISA Titer: 1:312500; Positive  
Control: HepG2 cell lysate