

## Product datasheet for **TA342983**

### Haspin (GSG2) Rabbit Polyclonal Antibody

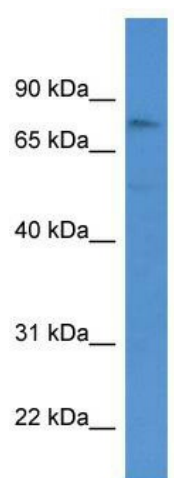
#### Product data:

Product Type:	Primary Antibodies
Applications:	WB
Recommended Dilution:	WB
Reactivity:	Human
Host:	Rabbit
Isotype:	IgG
Clonality:	Polyclonal
Immunogen:	The immunogen for anti-GSG2 antibody: synthetic peptide directed towards the middle region of human GSG2. Synthetic peptide located within the following region: QEAVRREHQEASVPKGRIVPRGIDRLERTRSSRKSKHQEATETSLLSHR
Formulation:	Liquid. Purified antibody supplied in 1x PBS buffer with 0.09% (w/v) sodium azide and 2% sucrose. <i>Note that this product is shipped as lyophilized powder to China customers.</i>
Conjugation:	Unconjugated
Storage:	Store at -20°C as received.
Stability:	Stable for 12 months from date of receipt.
Predicted Protein Size:	88 kDa
Gene Name:	germ cell associated 2, haspin
Database Link:	<a href="#">NP_114171</a> <a href="#">Entrez Gene 83903 Human</a> <a href="#">Q8TF76</a>
Background:	GSG2 is required for normal alignment of chromosomes at metaphase.
Synonyms:	HASPIN
Note:	Immunogen Sequence Homology: Human: 100%
Protein Families:	Druggable Genome, Protein Kinase



[View online »](#)

## Product images:



WB Suggested Anti-GSG2 Antibody Titration: 0.2-1 ug/ml; ELISA Titer: 1:312500; Positive Control: 721\_B cell lysate