

## Product datasheet for **TA342981**

### GFM2 Rabbit Polyclonal Antibody

#### Product data:

Product Type:	Primary Antibodies
Applications:	WB
Recommended Dilution:	WB
Reactivity:	Human
Host:	Rabbit
Isotype:	IgG
Clonality:	Polyclonal
Immunogen:	The immunogen for anti-GFM2 antibody: synthetic peptide directed towards the C terminal of human GFM2. Synthetic peptide located within the following region: TVGLKHTATGDTIVSSKSSALAAARRAEREKKEKHRQNNEAERLLLAGVE
Formulation:	Liquid. Purified antibody supplied in 1x PBS buffer with 0.09% (w/v) sodium azide and 2% sucrose. <i>Note that this product is shipped as lyophilized powder to China customers.</i>
Conjugation:	Unconjugated
Storage:	Store at -20°C as received.
Stability:	Stable for 12 months from date of receipt.
Predicted Protein Size:	86 kDa
Gene Name:	G elongation factor, mitochondrial 2
Database Link:	<a href="#">NP_115756</a> <a href="#">Entrez Gene 84340 Human</a> <a href="#">Q969S9</a>
Background:	Eukaryotes contain two protein translational systems, one in the cytoplasm and one in the mitochondria. Mitochondrial translation is crucial for maintaining mitochondrial function and mutations in this system lead to a breakdown in the respiratory chain-oxidative phosphorylation system and to impaired maintenance of mitochondrial DNA. GFM2 is one of mitochondrial translation elongation factors. Its role in the regulation of normal mitochondrial function and in different disease states attributed to mitochondrial dysfunction is not known.

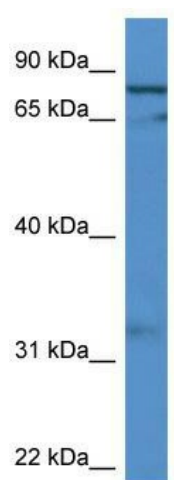


[View online »](#)

**Synonyms:** EF-G2mt; EFG2; hEFG2; mEF-G 2; MRRF2; MST027; MSTP027; RRF2; RRF2mt

**Note:** Immunogen Sequence Homology: Human: 100%; Dog: 93%; Pig: 86%; Horse: 86%; Bovine: 79%

**Product images:**



WB Suggested Anti-GFM2 Antibody Titration: 0.2-1 ug/ml; ELISA Titer: 1:1562500; Positive Control: MCF7 cell lysate