

Product datasheet for **TA342980**

ZCCHC9 Rabbit Polyclonal Antibody

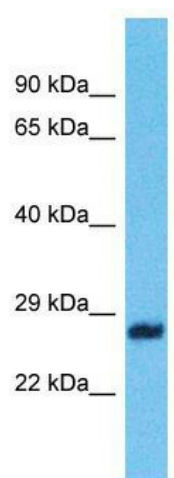
Product data:

Product Type:	Primary Antibodies
Applications:	WB
Recommended Dilution:	WB
Reactivity:	Human
Host:	Rabbit
Isotype:	IgG
Clonality:	Polyclonal
Immunogen:	The immunogen for anti-ZCCHC9 antibody is: synthetic peptide directed towards the C-terminal region of Human ZCCHC9. Synthetic peptide located within the following region: KLCGSVEHLKKDCPESQNSERMVTVGRWAKGMSADYEEILDVPKPQPKPT
Formulation:	Liquid. Purified antibody supplied in 1x PBS buffer with 0.09% (w/v) sodium azide and 2% sucrose. <i>Note that this product is shipped as lyophilized powder to China customers.</i>
Purification:	Affinity Purified
Conjugation:	Unconjugated
Storage:	Store at -20°C as received.
Stability:	Stable for 12 months from date of receipt.
Predicted Protein Size:	30 kDa
Gene Name:	zinc finger CCHC-type containing 9
Database Link:	NP_115656 Entrez Gene 84240 Human Q8N567
Background:	The function of this protein remains unknown.
Synonyms:	PPP1R41
Note:	Immunogen Sequence Homology: Human: 100%; Dog: 92%; Rabbit: 92%; Horse: 91%; Bovine: 85%; Rat: 83%; Pig: Mouse: 75%



[View online »](#)

Product images:



Host: Rabbit; Target Name: ZCCHC9; Sample
Tissue: COLO205 Whole cell lysates; Antibody
Dilution: 1.0 ug/ml