

Product datasheet for **TA342979**

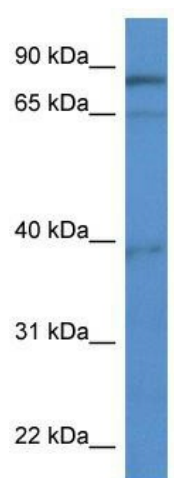
ZCCHC7 Rabbit Polyclonal Antibody

Product data:

Product Type:	Primary Antibodies
Applications:	WB
Recommended Dilution:	WB
Reactivity:	Human
Host:	Rabbit
Isotype:	IgG
Clonality:	Polyclonal
Immunogen:	The immunogen for anti-ZCCHC7 antibody: synthetic peptide directed towards the C terminal of human ZCCHC7. Synthetic peptide located within the following region: KNRNWEKHRKADRHREVDVDFPRGPKTYSSPGSFKTQKPSKPFHRSSHYH
Formulation:	Liquid. Purified antibody supplied in 1x PBS buffer with 0.09% (w/v) sodium azide and 2% sucrose. <i>Note that this product is shipped as lyophilized powder to China customers.</i>
Conjugation:	Unconjugated
Storage:	Store at -20°C as received.
Stability:	Stable for 12 months from date of receipt.
Predicted Protein Size:	63 kDa
Gene Name:	zinc finger CCHC-type containing 7
Database Link:	NP_115602 Entrez Gene 84186 Human Q8N3Z6
Background:	The function of this protein remains unknown.
Synonyms:	AIR1; HSPC086
Note:	Immunogen Sequence Homology: Human: 100%; Horse: 86%; Pig: 79%
Protein Pathways:	RNA degradation



[View online »](#)

Product images:

WB Suggested Anti-ZCCHC7 Antibody Titration:
0.2-1 ug/ml; ELISA Titer: 1:312500; Positive
Control: Jurkat cell lysate