

Product datasheet for **TA342976**

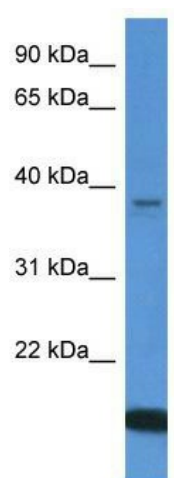
WDR54 Rabbit Polyclonal Antibody

Product data:

Product Type:	Primary Antibodies
Applications:	WB
Recommended Dilution:	WB
Reactivity:	Human
Host:	Rabbit
Isotype:	IgG
Clonality:	Polyclonal
Immunogen:	The immunogen for anti-WDR54 antibody: synthetic peptide directed towards the C terminal of human WDR54. Synthetic peptide located within the following region: HVQINAHARAICALDLASEVKGKLLSAGEDTFVHIWKLRSNPESGYIEVEH
Formulation:	Liquid. Purified antibody supplied in 1x PBS buffer with 0.09% (w/v) sodium azide and 2% sucrose. <i>Note that this product is shipped as lyophilized powder to China customers.</i>
Conjugation:	Unconjugated
Storage:	Store at -20°C as received.
Stability:	Stable for 12 months from date of receipt.
Predicted Protein Size:	36 kDa
Gene Name:	WD repeat domain 54
Database Link:	NP_115494 Entrez Gene 84058 Human Q9H977
Background:	The function of this protein remains unknown.
Synonyms:	FLJ12953
Note:	Immunogen Sequence Homology: Human: 100%; Pig: 86%; Rat: 86%; Mouse: 86%; Bovine: 86%; Rabbit: 86%; Dog: 79%; Horse: 79%; Guinea pig: 79%



[View online »](#)

Product images:

WB Suggested Anti-WDR54 Antibody Titration:
0.2-1 ug/ml; ELISA Titer: 1:312500; Positive
Control: Human Lung