

Product datasheet for **TA342975**

VPS25 Rabbit Polyclonal Antibody

Product data:

Product Type:	Primary Antibodies
Applications:	WB
Recommended Dilution:	WB
Reactivity:	Rat
Host:	Rabbit
Isotype:	IgG
Clonality:	Polyclonal
Immunogen:	The immunogen for anti-Vps25 antibody is: synthetic peptide directed towards the C-terminal region of Rat Vps25. Synthetic peptide located within the following region: LYELTSGEDTEEEEFHGLDEATLLRALQALQEQEHKAEIITVSDGRGVKFF
Formulation:	Liquid. Purified antibody supplied in 1x PBS buffer with 0.09% (w/v) sodium azide and 2% sucrose. <i>Note that this product is shipped as lyophilized powder to China customers.</i>
Conjugation:	Unconjugated
Storage:	Store at -20°C as received.
Stability:	Stable for 12 months from date of receipt.
Predicted Protein Size:	19 kDa
Gene Name:	vacuolar protein sorting 25 homolog
Database Link:	NP_115729 Entrez Gene 681059 Rat Q9BRG1
Background:	Vps25 is a component of the ESCRT-II complex (endosomal sorting complex required for transport II), which is required for multivesicular body (MVB) formation and sorting of endosomal cargo proteins into MVBs. The MVB pathway mediates delivery of transmembrane proteins into the lumen of the lysosome for degradation. The ESCRT-II complex is probably involved in the recruitment of the ESCRT-III complex. The ESCRT-II complex may also play a role in transcription regulation, possibly via its interaction with ELL.
Synonyms:	DERP9; EAP20; FAP20



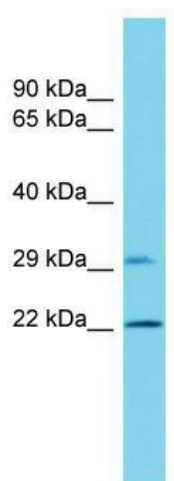
[View online »](#)

Note: Immunogen Sequence Homology: Dog: 100%; Rat: 100%; Human: 100%; Mouse: 100%; Bovine: 100%; Pig: 86%; Guinea pig: 86%

Protein Families: Transcription Factors

Protein Pathways: Endocytosis

Product images:



Host: Rabbit; Target Name: Vps25; Sample Tissue: Rat Pancreas lysates; Antibody Dilution: 1.0 ug/ml