

Product datasheet for **TA342974**

UTP23 Rabbit Polyclonal Antibody

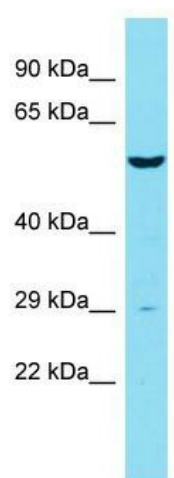
Product data:

Product Type:	Primary Antibodies
Applications:	WB
Recommended Dilution:	WB
Reactivity:	Human
Host:	Rabbit
Isotype:	IgG
Clonality:	Polyclonal
Immunogen:	The immunogen for anti-UTP23 antibody is: synthetic peptide directed towards the middle region of Human UTP23. Synthetic peptide located within the following region: SPKTIAFVKAVESGQLVSVHEKESIKHLKEEQGLVKNTEQSRRKRRKKIS
Formulation:	Liquid. Purified antibody supplied in 1x PBS buffer with 0.09% (w/v) sodium azide and 2% sucrose. <i>Note that this product is shipped as lyophilized powder to China customers.</i>
Conjugation:	Unconjugated
Storage:	Store at -20°C as received.
Stability:	Stable for 12 months from date of receipt.
Predicted Protein Size:	28 kDa
Gene Name:	UTP23, small subunit processome component
Database Link:	NP_115710 Entrez Gene 84294 Human Q9BRU9
Background:	UTP23 may be involved in rRNA-processing and ribosome biogenesis.
Synonyms:	C8orf53
Note:	Immunogen Sequence Homology: Human: 100%; Rabbit: 86%; Rat: 85%; Dog: 79%; Horse: 79%; Bovine: 79%



[View online »](#)

Product images:



Host: Rabbit; Target Name: UTP23; Sample
Tissue: PANC1 Whole Cell lysates; Antibody
Dilution: 1.0 ug/ml