

Product datasheet for **TA342973**

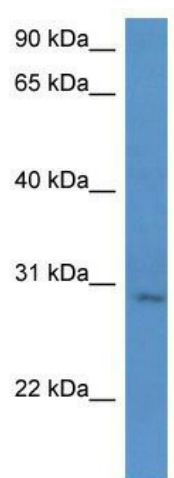
UTP23 Rabbit Polyclonal Antibody

Product data:

Product Type:	Primary Antibodies
Applications:	WB
Recommended Dilution:	WB
Reactivity:	Human
Host:	Rabbit
Isotype:	IgG
Clonality:	Polyclonal
Immunogen:	The immunogen for anti-UTP23 antibody: synthetic peptide directed towards the C terminal of human UTP23. Synthetic peptide located within the following region: SGPNPLSCLKKKKKAPDTQSSASEKKRKRKRIRNRSNPKVLSEKQNAEGE
Formulation:	Liquid. Purified antibody supplied in 1x PBS buffer with 0.09% (w/v) sodium azide and 2% sucrose.
Conjugation:	Unconjugated
Storage:	Store at -20°C as received.
Stability:	Stable for 12 months from date of receipt.
Predicted Protein Size:	28 kDa
Gene Name:	UTP23, small subunit processome component
Database Link:	NP_115710 Entrez Gene 84294 Human Q9BRU9
Background:	UTP23 may be involved in rRNA-processing and ribosome biogenesis.
Synonyms:	C8orf53
Note:	Immunogen Sequence Homology: Dog: 100%; Human: 100%; Bovine: 100%; Rabbit: 100%; Pig: 85%



[View online »](#)

Product images:

WB Suggested Anti-UTP23 Antibody Titration: 0.2-1 ug/ml; ELISA Titer: 1:62500; Positive Control: Jurkat cell lysate