

Product datasheet for **TA342972**

TCHP Rabbit Polyclonal Antibody

Product data:

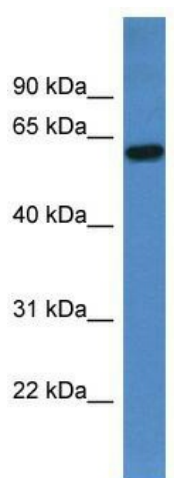
Product Type:	Primary Antibodies
Applications:	WB
Recommended Dilution:	WB
Reactivity:	Human
Host:	Rabbit
Isotype:	IgG
Clonality:	Polyclonal
Immunogen:	The immunogen for anti-TCHP antibody: synthetic peptide directed towards the C terminal of human TCHP. Synthetic peptide located within the following region: IQEKIEQNRRAQEESLKHREQLIRNLEEVRRELARREKEESEKLKSARKQE
Formulation:	Liquid. Purified antibody supplied in 1x PBS buffer with 0.09% (w/v) sodium azide and 2% sucrose. <i>Note that this product is shipped as lyophilized powder to China customers.</i>
Conjugation:	Unconjugated
Storage:	Store at -20°C as received.
Stability:	Stable for 12 months from date of receipt.
Predicted Protein Size:	61 kDa
Gene Name:	trichoplein keratin filament binding
Database Link:	NP_115676 Entrez Gene 84260 Human Q9BT92
Background:	TCHP is a tumor suppressor which has the ability to inhibit cell growth and be pro-apoptotic during cell stress. It inhibits cell growth in bladder and prostate cancer cells by a down-regulation of HSPB1 by inhibiting its phosphorylation. It may act as a 'capping' or 'branching' protein for keratin filaments in the cell periphery. And it also may regulate K8/K18 filament and desmosome organization mainly at the apical or peripheral regions of simple epithelial cells.
Synonyms:	TpMs



[View online »](#)

Note: Immunogen Sequence Homology: Pig: 100%; Rat: 100%; Horse: 100%; Human: 100%; Mouse: 100%; Bovine: 100%; Guinea pig: 100%; Yeast: 91%; Dog: 86%; Rabbit: 86%

Product images:



WB Suggested Anti-TCHP Antibody Titration: 0.2-1 ug/ml; ELISA Titer: 1:312500; Positive Control: Human Liver