

Product datasheet for **TA342971**

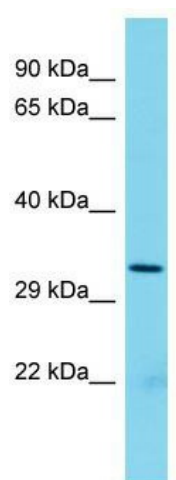
BXDC1 (RPF2) Rabbit Polyclonal Antibody

Product data:

Product Type:	Primary Antibodies
Applications:	WB
Recommended Dilution:	WB
Reactivity:	Rat
Host:	Rabbit
Isotype:	IgG
Clonality:	Polyclonal
Immunogen:	The immunogen for anti-Rpf2 antibody is: synthetic peptide directed towards the N-terminal region of Rat Rpf2. Synthetic peptide located within the following region: SLEFFSKSDCSLFMFGSHNKKRPNNLVIGRMYDYHVLDMIELGIEKFVS
Formulation:	Liquid. Purified antibody supplied in 1x PBS buffer with 0.09% (w/v) sodium azide and 2% sucrose. <i>Note that this product is shipped as lyophilized powder to China customers.</i>
Conjugation:	Unconjugated
Storage:	Store at -20°C as received.
Stability:	Stable for 12 months from date of receipt.
Predicted Protein Size:	33 kDa
Gene Name:	ribosome production factor 2 homolog
Database Link:	NP_115570 Entrez Gene 294436 Rat Q9H7B2
Background:	The function of this protein remains unknown.
Synonyms:	bA397G5.4; BXDC1
Note:	Immunogen Sequence Homology: Dog: 100%; Pig: 100%; Rat: 100%; Horse: 100%; Human: 100%; Mouse: 100%; Bovine: 100%; Rabbit: 100%; Guinea pig: 100%; Zebrafish: 93%; Yeast: 79%



[View online »](#)

Product images:


Host: Rabbit; Target Name: Rpf2; Sample Tissue:
Rat Spleen lysates; Antibody Dilution: 1.0 ug/ml