

Product datasheet for **TA342970**

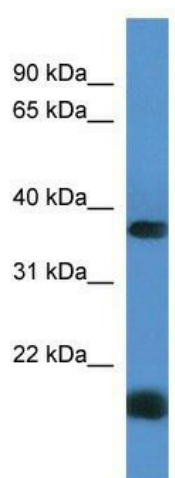
RHBDD1 Rabbit Polyclonal Antibody

Product data:

Product Type:	Primary Antibodies
Applications:	WB
Recommended Dilution:	WB
Reactivity:	Human
Host:	Rabbit
Isotype:	IgG
Clonality:	Polyclonal
Immunogen:	The immunogen for anti-RHBDD1 antibody: synthetic peptide directed towards the C terminal of human RHBDD1. Synthetic peptide located within the following region: PDHYEEAPRNYDTYTAGLSEEEQLERALQASLWDRGNTRNSPPPYGFHLS
Formulation:	Liquid. Purified antibody supplied in 1x PBS buffer with 0.09% (w/v) sodium azide and 2% sucrose. <i>Note that this product is shipped as lyophilized powder to China customers.</i>
Conjugation:	Unconjugated
Storage:	Store at -20°C as received.
Stability:	Stable for 12 months from date of receipt.
Predicted Protein Size:	36 kDa
Gene Name:	rhomboid domain containing 1
Database Link:	NP_115652 Entrez Gene 84236 Human Q8TEB9
Background:	The function of this protein remains unknown.
Synonyms:	RRP4
Note:	Immunogen Sequence Homology: Human: 100%; Dog: 93%; Rat: 93%; Horse: 93%; Mouse: 93%; Bovine: 93%; Rabbit: 86%; Yeast: 85%; Pig: 79%; Guinea pig: 79%
Protein Families:	Transmembrane



[View online »](#)

Product images:

WB Suggested Anti-RHBDD1 Antibody Titration:
0.2-1 ug/ml; ELISA Titer: 1:312500; Positive
Control: Human kidney