

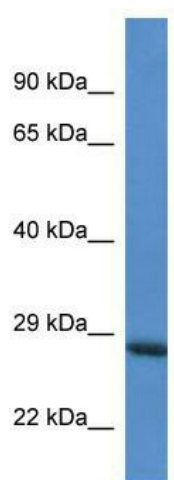
Product datasheet for **TA342969**

RAB6C Rabbit Polyclonal Antibody

Product data:

| | |
|-------------------------|--|
| Product Type: | Primary Antibodies |
| Applications: | WB |
| Recommended Dilution: | WB |
| Reactivity: | Human |
| Host: | Rabbit |
| Isotype: | IgG |
| Clonality: | Polyclonal |
| Immunogen: | The immunogen for anti-RAB6C antibody: synthetic peptide directed towards the middle region of human RAB6C. Synthetic peptide located within the following region: DVIITLVGNRTDLADKRQVSVEEGERKAKGLNVTFIETRAKAGYNVKQLF |
| Formulation: | Liquid. Purified antibody supplied in 1x PBS buffer with 0.09% (w/v) sodium azide and 2% sucrose. |
| Conjugation: | Unconjugated |
| Storage: | Store at -20°C as received. |
| Stability: | Stable for 12 months from date of receipt. |
| Predicted Protein Size: | 28 kDa |
| Gene Name: | RAB6C, member RAS oncogene family |
| Database Link: | NP_115520 Entrez Gene 84084 Human Q9H0N0 |
| Background: | The function remains unknown. |
| Synonyms: | WTH3 |
| Note: | Immunogen Sequence Homology: Human: 100%; Dog: 92%; Pig: 92%; Rat: 92%; Horse: 92%; Mouse: 92%; Yeast: 92%; Bovine: 92%; Rabbit: 92%; Zebrafish: 92%; Guinea pig: 92%; Goat: 85% |
| Protein Families: | Druggable Genome |


[View online »](#)

Product images:

WB Suggested Anti-RAB6C Antibody; Titration: 1.0 ug/ml; Positive Control: HepG2 Whole Cell RAB6C is supported by BioGPS gene expression data to be expressed in HepG2