

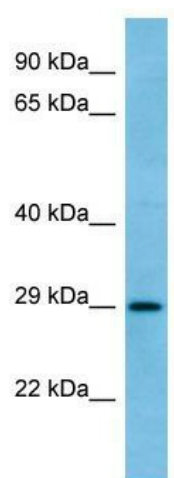
## Product datasheet for **TA342968**

### **RAB6C Rabbit Polyclonal Antibody**

#### **Product data:**

Product Type:	Primary Antibodies
Applications:	WB
Recommended Dilution:	WB
Reactivity:	Human
Host:	Rabbit
Isotype:	IgG
Clonality:	Polyclonal
Immunogen:	The immunogen for anti-RAB6C antibody is: synthetic peptide directed towards the C-terminal region of Human RAB6C. Synthetic peptide located within the following region: YNVKQLFRRVAAALPGMESTQDGSREDMSDIKLEKPQEQTVSEGGCSCYS
Formulation:	Liquid. Purified antibody supplied in 1x PBS buffer with 0.09% (w/v) sodium azide and 2% sucrose.
Conjugation:	Unconjugated
Storage:	Store at -20°C as received.
Stability:	Stable for 12 months from date of receipt.
Predicted Protein Size:	28 kDa
Gene Name:	RAB6C, member RAS oncogene family
Database Link:	<a href="#">NP_115520</a> <a href="#">Entrez Gene 84084 Human</a> <a href="#">Q9H0N0</a>
Background:	The function remains unknown.
Synonyms:	WTH3
Note:	Immunogen Sequence Homology: Human: 100%; Dog: 93%; Pig: 93%; Rat: 93%; Horse: 93%; Bovine: 93%; Rabbit: 93%; Mouse: 86%; Zebrafish: 86%; Guinea pig: 86%
Protein Families:	Druggable Genome


[View online »](#)

**Product images:**


WB Suggested Anti-RAB6C Antibody; Titration: 1.0 ug/ml; Positive Control: Fetal Thymus