

## Product datasheet for **TA342967**

### GPR103 (QRFPR) Rabbit Polyclonal Antibody

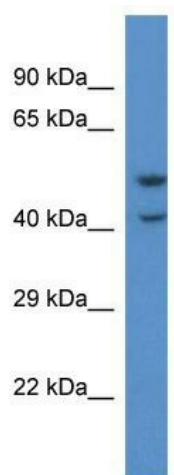
#### Product data:

|                         |   |
|-------------------------|---|
| Product Type:           | Primary Antibodies  |
| Applications:           | WB  |
| Recommended Dilution:   | WB  |
| Reactivity:             | Human   |
| Host:                   | Rabbit  |
| Isotype:                | IgG   |
| Clonality:              | Polyclonal  |
| Immunogen:              | The immunogen for anti-QRFPR antibody: synthetic peptide directed towards the C terminal of human QRFPR. Synthetic peptide located within the following region: FSLRENPV EETKGEAFSDGNIEVKLCEQTEEKKKLKRHLALFRSELAENS |
| Formulation:            | Liquid. Purified antibody supplied in 1x PBS buffer with 0.09% (w/v) sodium azide and 2% sucrose.<br><i>Note that this product is shipped as lyophilized powder to China customers.</i>                             |
| Conjugation:            | Unconjugated  |
| Storage:                | Store at -20°C as received.   |
| Stability:              | Stable for 12 months from date of receipt.  |
| Predicted Protein Size: | 49 kDa  |
| Gene Name:              | pyroglutamylated RFamide peptide receptor   |
| Database Link:          | <a href="#">NP_937822</a><br><a href="#">Entrez Gene 84109 Human</a><br><a href="#">Q96P65</a>  |
| Background:             | G protein-coupled receptors (GPCRs, or GPRs) contain 7 transmembrane domains and transduce extracellular signals through heterotrimeric G proteins.   |
| Synonyms:               | AQ27; GPR103; SP9155  |
| Note:                   | Immunogen Sequence Homology: Human: 100%; Rat: 86%; Pig: 85%; Bovine: 85%; Guinea pig: 85%; Horse: 79%; Rabbit; Zebrafish: 75%  |
| Protein Families:       | Druggable Genome, GPCR, Transmembrane   |



[View online »](#)

## Product images:



WB Suggested Anti-QRFPR Antibody; Titration: 1.0 ug/ml; Positive Control: Jurkat Whole Cell