

Product datasheet for **TA342966**

PCBD2 Rabbit Polyclonal Antibody

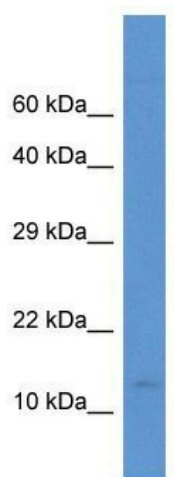
Product data:

Product Type:	Primary Antibodies
Applications:	WB
Recommended Dilution:	WB
Reactivity:	Human
Host:	Rabbit
Isotype:	IgG
Clonality:	Polyclonal
Immunogen:	The immunogen for anti-PCBD2 antibody: synthetic peptide directed towards the N terminal of human PCBD2. Synthetic peptide located within the following region: SGTHRLTAERNQAILDLKAAGWSELSESDAIYKEFSFHNFNQAFGFMSR
Formulation:	Liquid. Purified antibody supplied in 1x PBS buffer with 0.09% (w/v) sodium azide and 2% sucrose.
Conjugation:	Unconjugated
Storage:	Store at -20°C as received.
Stability:	Stable for 12 months from date of receipt.
Predicted Protein Size:	14 kDa
Gene Name:	pterin-4 alpha-carbinolamine dehydratase 2
Database Link:	NP_115527 Entrez Gene 84105 Human Q9H0N5
Background:	PCBD2 is involved in tetrahydrobiopterin biosynthesis. It seems to both prevent the formation of 7-pterins and accelerate the formation of quinonoid-BH2.
Synonyms:	DCOH2; DCOHM; PHS2
Note:	Immunogen Sequence Homology: Rat: 100%; Horse: 100%; Human: 100%; Mouse: 100%; Rabbit: 100%; Dog: 93%; Pig: 93%; Guinea pig: 93%; Yeast: 90%
Protein Families:	Druggable Genome, Transcription Factors



[View online »](#)

Product images:



WB Suggested Anti-PCBD2 Antibody; Titration: 1.0 ug/ml; Positive Control: Fetal Small Intestine