

Product datasheet for **TA342965**

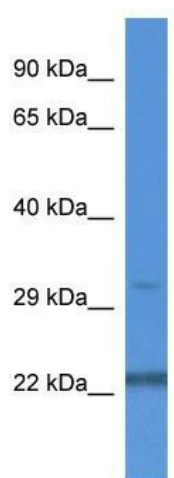
NUDT22 Rabbit Polyclonal Antibody

Product data:

Product Type:	Primary Antibodies
Applications:	WB
Recommended Dilution:	WB
Reactivity:	Human
Host:	Rabbit
Isotype:	IgG
Clonality:	Polyclonal
Immunogen:	The immunogen for anti-NUDT22 antibody: synthetic peptide directed towards the C terminal of human NUDT22. Synthetic peptide located within the following region: FYVQCSLTSEQVRKHLYLSGGPEAHSTGIFFVETQNVRRLPETEMWAE LC
Formulation:	Liquid. Purified antibody supplied in 1x PBS buffer with 0.09% (w/v) sodium azide and 2% sucrose. <i>Note that this product is shipped as lyophilized powder to China customers.</i>
Conjugation:	Unconjugated
Storage:	Store at -20°C as received.
Stability:	Stable for 12 months from date of receipt.
Predicted Protein Size:	32 kDa
Gene Name:	nudix hydrolase 22
Database Link:	NP_115720 Entrez Gene 84304 Human Q9BRQ3
Background:	The function remains unknown.
Synonyms:	MGC13045
Note:	Immunogen Sequence Homology: Human: 100%; Pig: 86%; Horse: 86%; Bovine: 86%; Rabbit: 86%; Rat: 79%; Mouse: 79%



[View online »](#)

Product images:

WB Suggested Anti-NUDT22 Antibody; Titration:
1.0 ug/ml; Positive Control: Fetal kidney