

Product datasheet for **TA342960**

MRI1 Rabbit Polyclonal Antibody

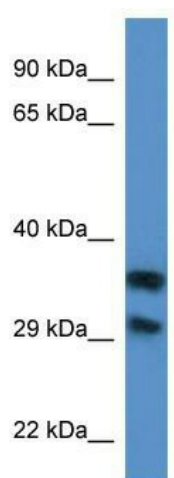
Product data:

Product Type:	Primary Antibodies
Applications:	WB
Recommended Dilution:	WB
Reactivity:	Human
Host:	Rabbit
Isotype:	IgG
Clonality:	Polyclonal
Immunogen:	The immunogen for anti-MGC3207 antibody: synthetic peptide directed towards the N terminal of human MGC3207. Synthetic peptide located within the following region: VNMARAARDLADVAAREAEREGATEEEAVRERRETELCEHWEEHTRQREL P
Formulation:	Liquid. Purified antibody supplied in 1x PBS buffer with 0.09% (w/v) sodium azide and 2% sucrose. <i>Note that this product is shipped as lyophilized powder to China customers.</i>
Conjugation:	Unconjugated
Storage:	Store at -20°C as received.
Stability:	Stable for 12 months from date of receipt.
Predicted Protein Size:	34 kDa
Gene Name:	methylthioribose-1-phosphate isomerase 1
Database Link:	NP 115661 Entrez Gene 84245 Human Q9BV20
Background:	MGC3207 catalyzes the interconversion of methylthioribose-1-phosphate (MTR-1-P) into methylthioribulose-1-phosphate (MTRu-1-P). Independently from catalytic activity, MGC3207 promotes cell invasion in response to constitutive RhoA activation by promoting FAK tyrosine phosphorylation and stress fiber turnover.
Synonyms:	MRDI; MTNA; Ypr118w
Note:	Immunogen Sequence Homology: Dog: 100%; Pig: 100%; Human: 100%; Bovine: 100%; Rabbit: 100%; Guinea pig: 100%



[View online »](#)

Product images:



WB Suggested Anti-MGC3207 Antibody; Titration:
1.0 ug/ml; Positive Control: MCF7 Whole Cell